

Installation Instructions for 52090, 52091, 52092, 52093 & 52094 Radiator Core Cover

Installation Instructions:

1. Straighten the edges of the top C-channel as shown in Figure 1 to achieve a 2-1/8" center to center spacing.
2. Cut 12" rubber trim into four(4) 3" long pieces as shown in Figure 2.
3. Turn each 3" piece inside out to increase the opening in the rubber trim as shown in Figure 3.
4. Slide the rubber trim into the end of the cover about 1" as shown in Figure 4.
5. Starting on one side lay the cover onto the radiator as shown in Figure 5.
6. Check for proper fit then remove the cover and reattach with high temperature silicone under the rubber trim pieces as shown in.



Figure 1



Figure 2



Figure 3

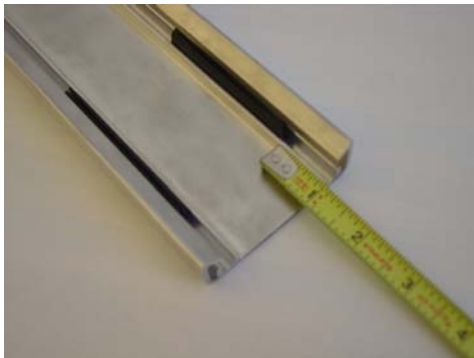


Figure 4



Figure 5